



An Roinn Ealaíon, Oidhreachta,
Gnóthaí Réigiúnacha, Tuaithe agus Gaeltachta

Department of Arts, Heritage,
Regional, Rural and Gaeltacht Affairs



The European Agricultural Fund
for Rural Development: Europe
investing in rural areas



Ireland's European Structural and
Investment Funds Programmes
2014-2020

Co-funded by the Irish Government
and the European Union



Department of
**Agriculture,
Food and the Marine**

An Roinn
**Talmhaíochta,
Bia agus Mara**



How to Change Internet Explorer Settings

LEADER CRM

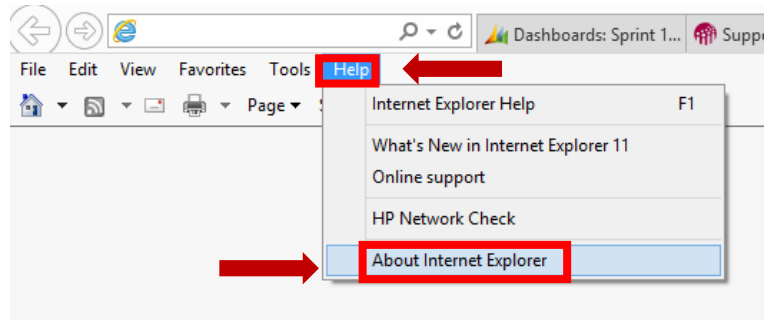


pobal

government supporting communities

If you are getting an error message when you try to access the LEADER URL (<https://hub.pobal.ie/Leader>) please check with your IT technician that your server firewall settings allow for a standard web port 80 (or 443 if using IFD)

It is recommended that you use Internet Explorer 10 (or higher version) with LEADER CRM. To check which version of IE is running on your computer, open Internet Explorer and click on **Help** (found on the **Menu bar**) and then **About Internet Explorer**

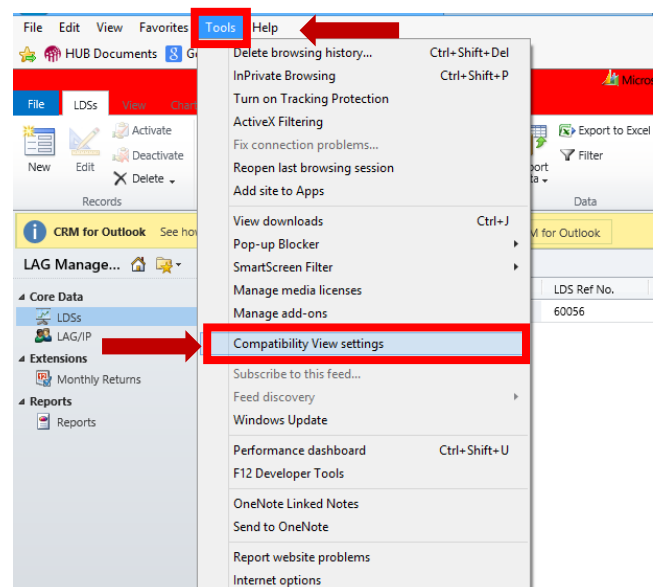


The following box will appear and you can check the version running on your computer. If you do not have version 10 or higher, contact your local IT technician to request an upgrade. Click on **Close** to exit.

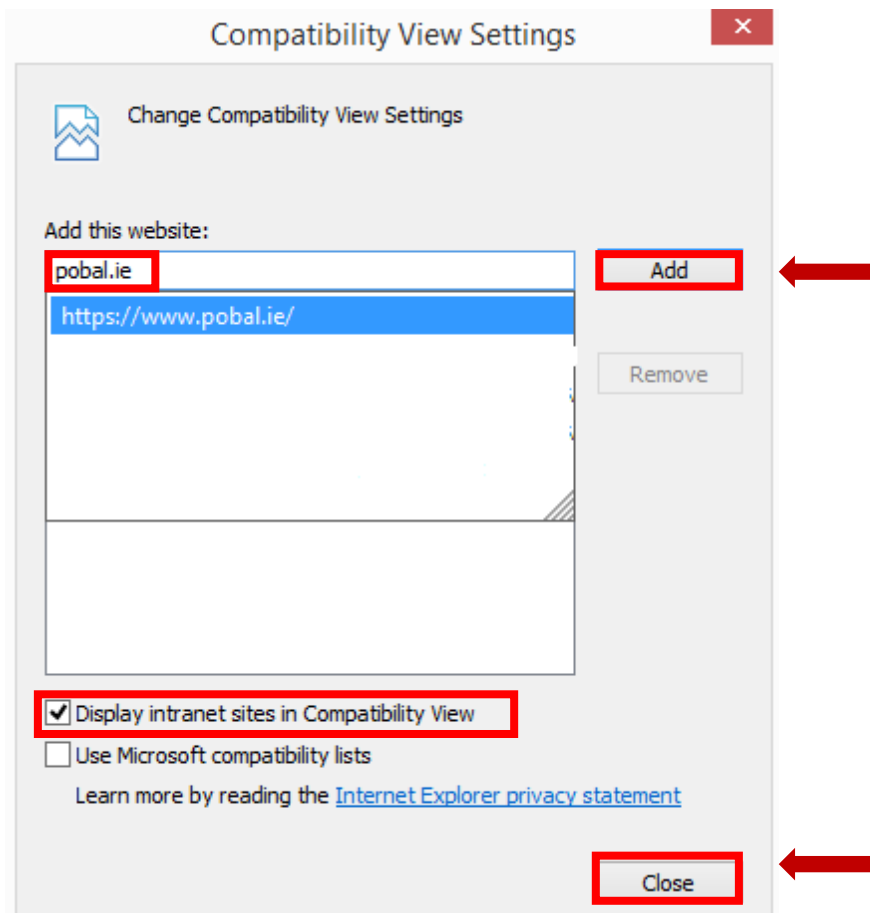


If you do have IE version 10 or higher, please make the following changes to your internet settings.

Open Internet Explorer, and select **Tools** and then **Compatibility View settings**.

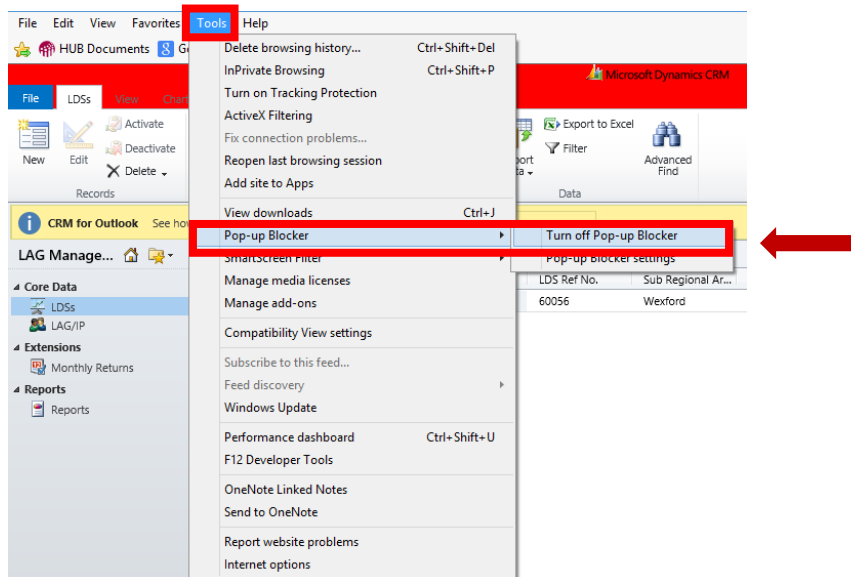


Enter **pobal.ie** and click **Add**.

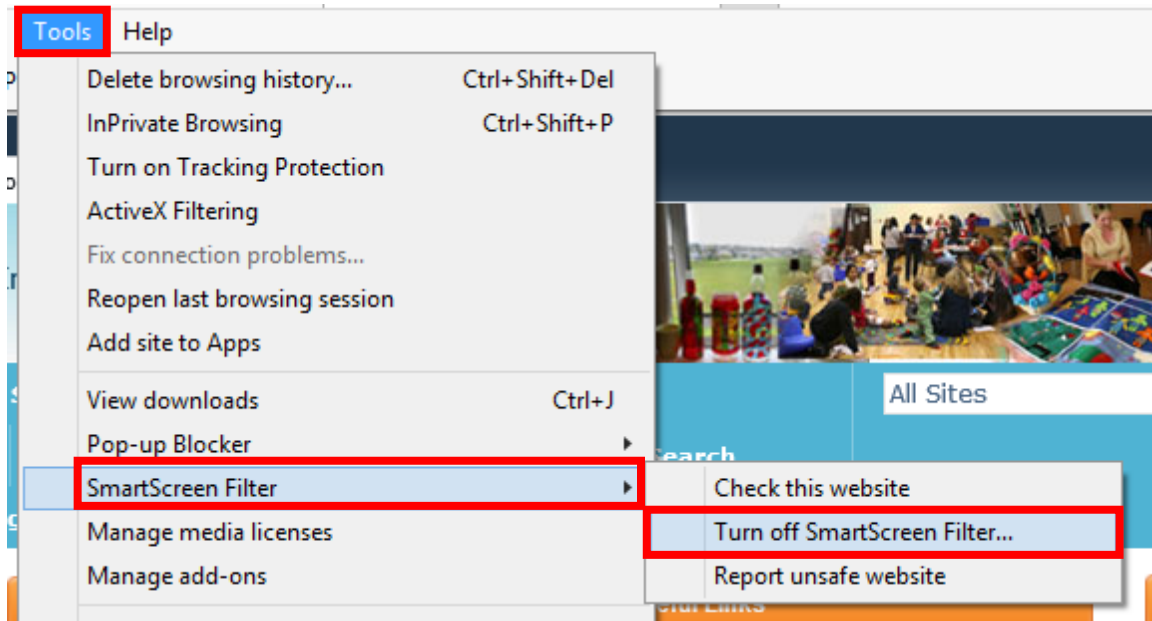


Note: You can also click the box Display all websites in Compatibility View if you wish to apply this setting to all websites.

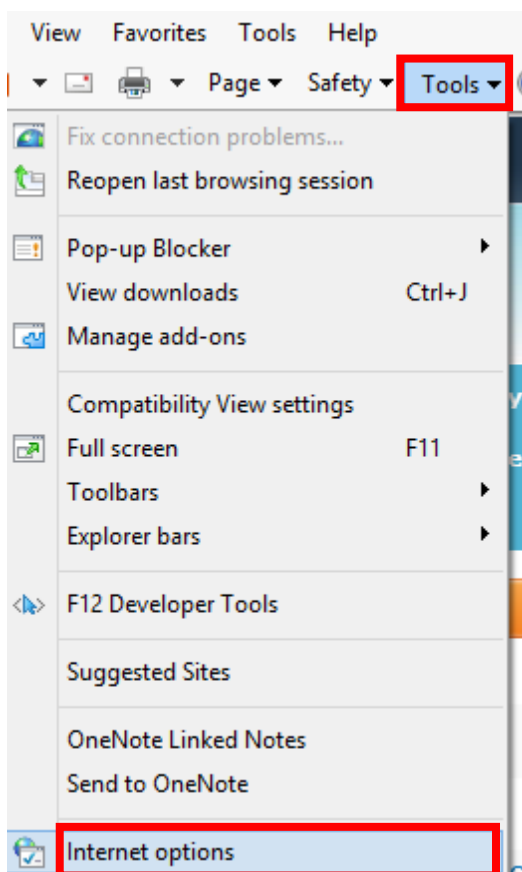
Next, click on **Tools**, **Pop-up Blocker** and **Turn off Pop-up Blocker**.



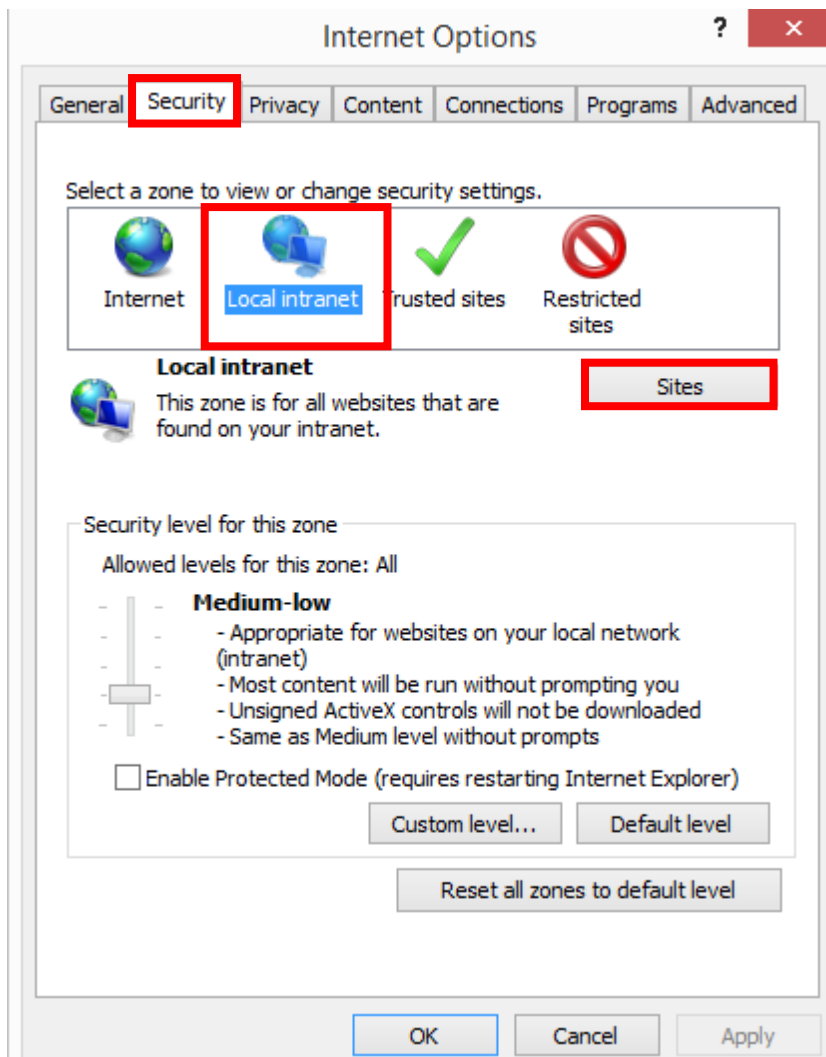
If there is link under **Tools** to **SmartScreen Filter**, select it and then select **Turn off SmartScreen Filter**.



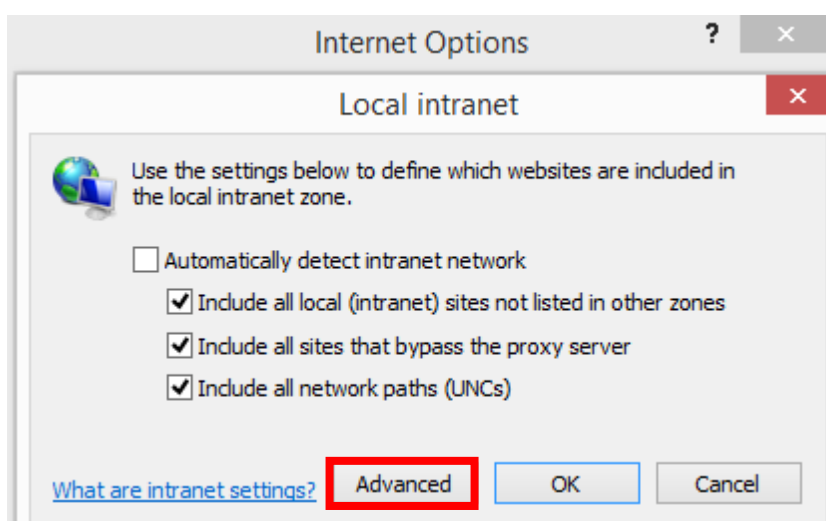
Next, select **Tools** and **Internet Options**.



Select the **Security** tab, then **Local intranet** and then click on **Sites**.



Click on **Advanced**.



Type **https://hub.pobal.ie/Leader** and click on **Add**.

Then type **https://online.pobal.ie** and click on **Add**.
Both of these URLs will be added to the Website box.
Click on **Close**.

